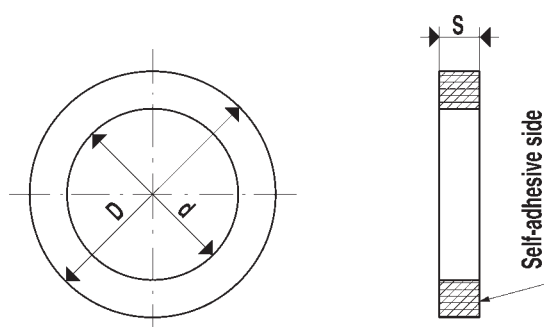


# [Foam rubber cups]



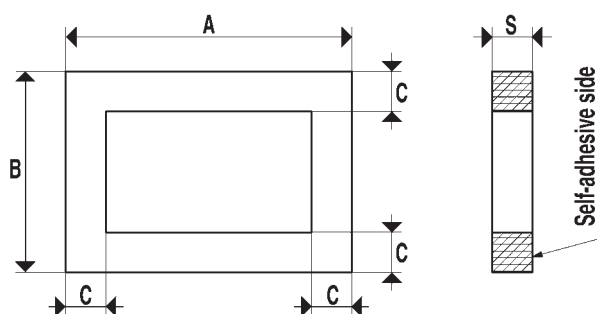
Art.	Force Kg.	D Ø	d Ø	S
FR.042.001.03	0.78	40	20	15
FR.064.002.03	3.5	64	40	15
FR.092.003.03	8.5	92	64	15
FR.127.004.03	17.5	127	92	15
FR.180.005.03	38.5	180	140	15
FR.220.006.03	63.6	220	180	15

The cups shown on this page are made with a special foam rubber compound which has such a density that allows them to grip also on uneven and very rough surfaces and to maintain their elasticity also after many working cycles.

The cups of this series have a self-adhesive side in order to allow a quick fixing to their supports. Foam rubber cups have been designed for handling loads with crude or very rough surfaces (sawn, bushammered or flamed marbles, buckle plates, treadplates or plates with fret, striated plexiglas, raw cement manufactures, garden tiles with grit, etc.) and in all those cases where traditional cups cannot be used.

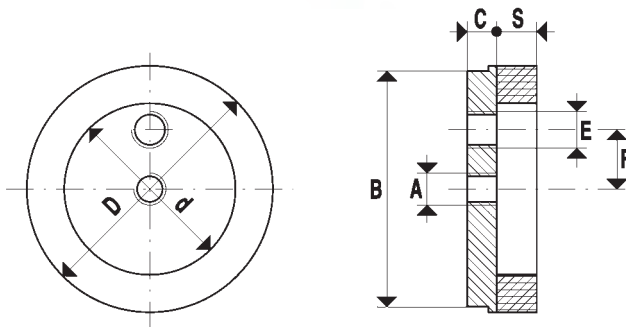
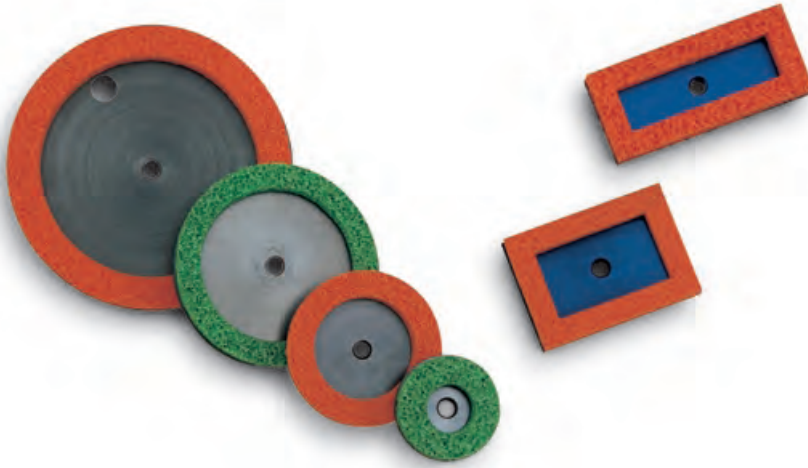
These cups are produced in circular and rectangular shapes; upon request they can be supplied in different sizes and shapes.

**Material:**  
Natural Rubber



Art.	Force Kg.	A	B	C	S
FR.107075.001.03	9	107	75	15	15
FR.135050.002.03	6	135	50	15	15
FR.135060.003.03	8	135	60	15	15
FR.290068.004.03	25	290	68	15	15
FR.290140.005.03	72	290	140	15	15

# [Foam rubber cups with support]



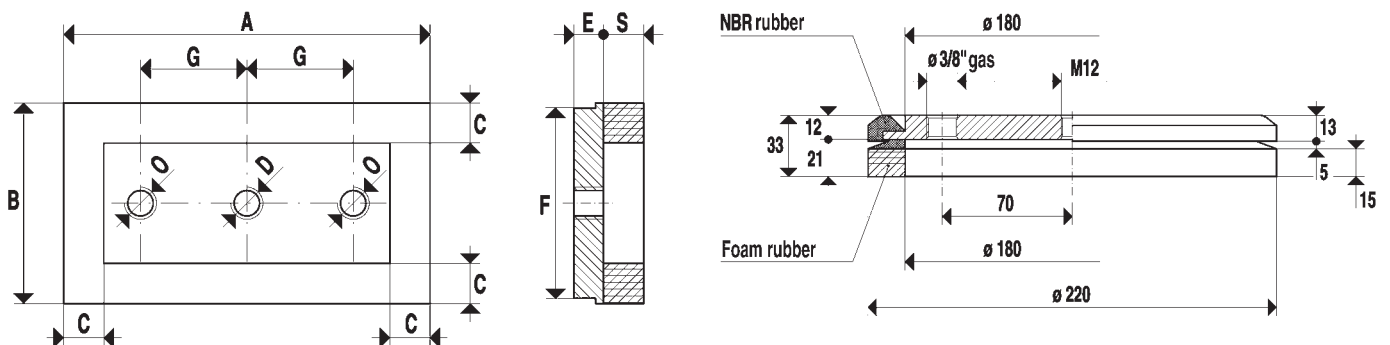
These cups are the same foam rubber cups as previously described, fixed on a proper support in anodized aluminium.

Supports have a central threaded hole to fasten them to the machine or to the cup holder and, upon request can be supplied with side threaded hole for the suction connection.

As a spare part it is sufficient to order only the cup in self-adhesive foam rubber corresponding to the support external sizes and with code 01 ... instead of 08 ...

**Material:**  
Natural Rubber

Art.	Force Kg.	A Ø	B Ø	C	D Ø	d Ø	E Ø	F	S
FC.042.001.03	0.78	M12	40	10	40	20	--	--	15
FC.064.002.03	3.5	M12	60	10	64	40	--	--	15
FC.092.003.03	8.5	M12	88	11	92	64	--	--	15
FC.127.004.03	17.5	M12	120	15	127	92	3/8"	30	15
FC.180.005.03	38.5	M12	160	12	180	140	3/8"	60	15



Art.	Force Kg.	A	B	C	D Ø	E	F	G	Ø	S
FC.107075.001.03	9	107	75	15	M12	11	70	--	--	15
FC.135050.002.03	6	135	50	15	M12	11	45	--	--	15
FC.135060.003.03	8	135	60	15	M12	11	55	--	--	15
FC.290068.004.03	25	290	68	15	3/8"	11	62	100	M12	15
FC.290140.005.03	72	290	140	15	1/2"	11	134	100	M12	15

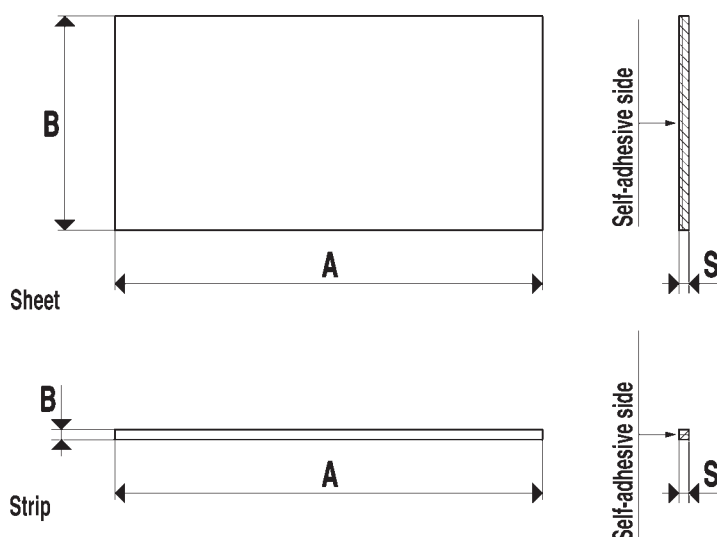
Art.	Force Kg.
FC.220.006.03	63,6

## Holding forces

Holding forces have been calculated in kg for 75% vacuum (-750 mbars) and triple safety



## [Foam rubber sheets and strips]



The same kind of foam rubber used for making suction cups can be supplied in sheets or strips, with the sizes shown in the table.

In order to allow an easy and quick fixing to the metal support, both rubber sheets and strips have a self-adhesive side.

With foam rubber sheets and strips, it is possible to make cups in whatever shape required and move loads with raw or very rough surfaces.

Upon request they can be supplied in different sizes and densities.

### Material:

Natural Rubber

Art.	A	B	S
<b>Sheets:</b>			
FR.20000900.10.03	2000	900	10
FR.20000900.15.03	2000	900	15
FR.20000900.20.03	2000	900	20
FR.20000900.25.03	2000	900	25
FR.20000900.30.03	2000	900	30
FR.20000900.40.03	2000	900	40
FR.20000900.45.03	2000	900	45
<b>Strips:</b>			
FR.20001010.03	2000	10	10
FR.20001510.03	2000	15	10
FR.20002010.03	2000	20	10
FR.20002015.03	2000	20	15